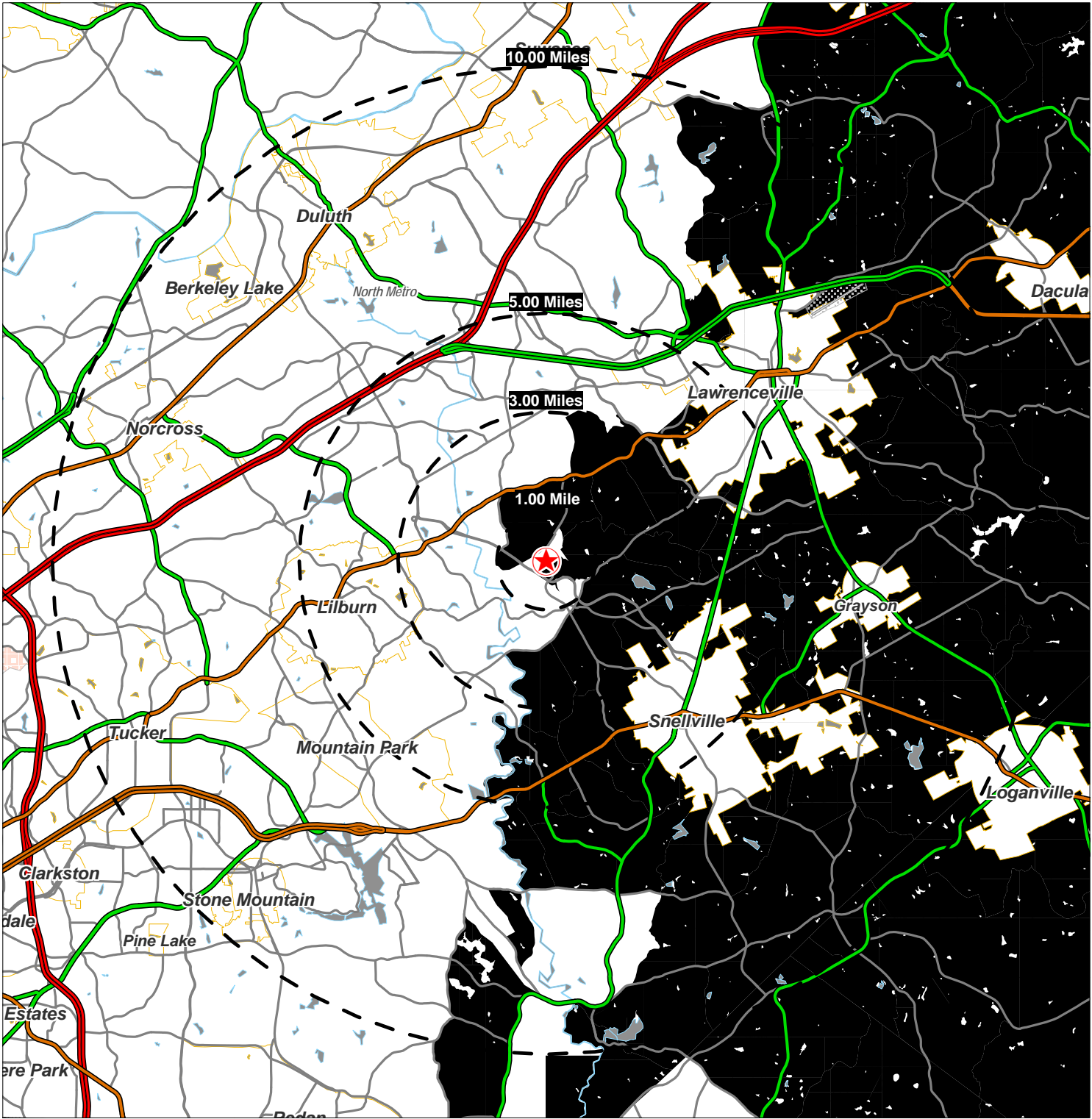


Lat: 33.902 Lon: -84.0682 Zoom: 22 m Logos are for identification purposes only and may be trademarks of their respective companies.



©2008, SITES USA Inc., Chandler, AZ (480) 491-1112. All Rights Reserved.

## Oak Rd & Hutchins Rd Lawrenceville, Georgia

June 2008

Two Midtown Plaza, Suite 1100  
1349 West Peachtree Street, NE  
Atlanta, Georgia 30309-2956  
tel: 404-888-9000  
fax: 404-870-2845

This map was produced using data from private and government sources deemed to be reliable. The information herein is provided without representation or warranty.

# DEMOGRAPHIC PROFILE EXPANDED

1990 - 2000 Census, 2007 Estimates & 2012 Projections

Calculated using Proportional Block Groups

Prepared For

Lat/Lon: 33.901954/-84.068246

June 2008



Two Midtown Plaza, Suite 1100  
1349 West Peachtree Street, NE  
Atlanta, Georgia 30309-2956  
tel: 404-888-9000  
fax: 404-876-2845

RF5

Oak Rd & Hutchins Rd Lawrenceville, Georgia	1.00 mi radius		3.00 mi radius		5.00 mi radius		10.00 mi radius	
<b>Population</b>								
Estimated Population (2007)	8,615		79,450		218,566		699,565	
Census Population (1990)	5,238		41,032		115,354		349,987	
Census Population (2000)	6,860		61,428		167,125		543,273	
Projected Population (2012)	9,635		90,383		250,193		798,635	
Forecasted Population (2017)	11,176		106,459		296,315		940,416	
Historical Annual Growth (1990 to 2000)	1,622	3.1%	20,396	5.0%	51,772	4.5%	193,287	5.5%
Historical Annual Growth (2000 to 2007)	1,755	3.7%	18,022	4.2%	51,440	4.4%	156,292	4.1%
Projected Annual Growth (2007 to 2012)	1,020	2.4%	10,933	2.8%	31,628	2.9%	99,069	2.8%
Est. Population Density (2007)	2,757.68 <i>psm</i>		2,842.06 <i>psm</i>		2,818.60 <i>psm</i>		2,263.35 <i>psm</i>	
Trade Area Size	3.12 <i>sq mi</i>		27.96 <i>sq mi</i>		77.54 <i>sq mi</i>		309.08 <i>sq mi</i>	
<b>Households</b>								
Estimated Households (2007)	2,680		25,544		73,139		237,614	
Census Households (1990)	1,575		13,035		39,177		127,101	
Census Households (2000)	2,204		20,263		57,476		188,922	
Projected Households (2012)	2,956		28,768		82,801		268,513	
Forecasted Households (2017)	3,373		33,483		96,844		312,642	
Households with Children (2007)	1,351	50.4%	12,228	47.9%	32,895	45.0%	103,530	43.6%
Average Household Size (2007)	3.21		3.10		2.97		2.92	
<b>Average Household Income</b>								
Est. Average Household Income (2007)	\$90,428		\$86,940		\$80,231		\$78,463	
Proj. Average Household Income (2012)	\$97,549		\$93,327		\$85,885		\$84,735	
Average Family Income (2007)	\$96,065		\$94,254		\$89,157		\$88,118	
<b>Median Household Income</b>								
Est. Median Household Income (2007)	\$90,190		\$85,365		\$76,462		\$74,171	
Proj. Median Household Income (2012)	\$101,569		\$95,583		\$85,549		\$83,456	
Median Family Income (2007)	\$94,588		\$92,346		\$85,216		\$83,912	
<b>Per Capita Income</b>								
Est. Per Capita Income (2007)	\$28,150		\$28,007		\$27,127		\$27,120	
Proj. Per Capita Income (2012)	\$29,954		\$29,758		\$28,681		\$28,927	
Per Capita Income Est. 5 year change	\$1,804	6.4%	\$1,751	6.3%	\$1,554	5.7%	\$1,807	6.7%
<b>Other Income</b>								
Est. Median Disposable Income (2007)	\$71,138		\$67,585		\$61,256		\$59,674	
Est. Median Disposable Income (2012)	\$79,068		\$74,813		\$67,789		\$66,227	
Disposable Income Est. 5 year change	\$7,930	11.1%	\$7,228	10.7%	\$6,533	10.7%	\$6,553	11.0%
Est. Median Household Net Worth (2007)	\$709,836		\$683,164		\$599,795		\$595,983	
<b>Daytime Demos</b>								
Total Number of Businesses (2007)	155		1,755		7,173		27,072	
Total Number of Employees (2007)	977		13,052		80,250		309,664	
Company Headqtrs: Businesses (2007)	0	0	1	0.0%	21	0.3%	125	0.5%
Company Headqtrs: Employees (2007)	0	0	48	0.4%	4,225	5.3%	14,886	4.8%
Unemployment Rate (2007)	6.10%		4.50%		4.80%		5.20%	
Employee Population per Business	6.3 to 1		7.4 to 1		11.2 to 1		11.4 to 1	
Residential Population per Business	55.7 to 1		45.3 to 1		30.5 to 1		25.8 to 1	

This report was produced using data from private and government sources deemed to be reliable. The information herein is provided without representation or warranty.

# DEMOGRAPHIC PROFILE EXPANDED

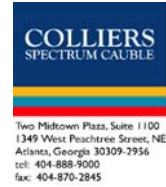
1990 - 2000 Census, 2007 Estimates & 2012 Projections

Calculated using Proportional Block Groups

Prepared For

Lat/Lon: 33.901954/-84.068246

June 2008



RF5

Oak Rd & Hutchins Rd Lawrenceville, Georgia	1.00 mi radius		3.00 mi radius		5.00 mi radius		10.00 mi radius	
<b>Race &amp; Ethnicity</b>								
White (2007)	5,472	63.5%	48,668	61.3%	126,721	58.0%	375,174	53.6%
Black or African American (2007)	1,633	19.0%	14,622	18.4%	45,362	20.8%	171,213	24.5%
American Indian & Alaska Native (2007)	22	0.3%	174	0.2%	574	0.3%	1,882	0.3%
Asian (2007)	721	8.4%	8,351	10.5%	22,748	10.4%	71,425	10.2%
Hawaiian & Pacific Islander (2007)	1	0.0%	17	0.0%	58	0.0%	259	0.0%
Other Race (2007)	408	4.7%	4,440	5.6%	13,749	6.3%	50,088	7.2%
Two or More Races (2007)	358	4.2%	3,178	4.0%	9,354	4.3%	29,524	4.2%
Not Hispanic or Latino Population (2007)	7,683	89.2%	69,399	87.3%	184,946	84.6%	575,845	82.3%
Hispanic or Latino Population (2007)	932	10.8%	10,051	12.7%	33,620	15.4%	123,721	17.7%
Not of Hispanic Origin Population (1990)	5,160	98.5%	40,209	98.0%	112,816	97.8%	341,140	97.5%
Hispanic Origin Population (1990)	78	1.5%	823	2.0%	2,538	2.2%	8,846	2.5%
Not Hispanic or Latino Population (2000)	6,441	93.9%	56,923	92.7%	151,857	90.9%	483,138	88.9%
Hispanic or Latino Population (2000)	419	6.1%	4,505	7.3%	15,268	9.1%	60,135	11.1%
Not Hispanic or Latino Population (2012)	8,296	86.1%	76,107	84.2%	203,598	81.4%	633,421	79.3%
Hispanic or Latino Population (2012)	1,340	13.9%	14,276	15.8%	46,595	18.6%	165,213	20.7%
Hist. Hispanic Ann Growth (1990 to 2007)	853	64.0%	9,228	66.0%	31,082	72.0%	114,874	76.4%
Proj. Hispanic Ann Growth (2007 to 2012)	408	8.8%	4,225	8.4%	12,975	7.7%	41,493	6.7%
<b>Age Distribution</b>								
Age 0 to 4 yrs (2007)	628	7.3%	6,214	7.8%	17,455	8.0%	58,739	8.4%
Age 5 to 9 yrs (2007)	649	7.5%	6,052	7.6%	16,408	7.5%	53,524	7.7%
Age 10 to 14 yrs (2007)	758	8.8%	6,329	8.0%	16,599	7.6%	50,750	7.3%
Age 15 to 19 yrs (2007)	737	8.6%	6,172	7.8%	16,251	7.4%	48,389	6.9%
Age 20 to 24 yrs (2007)	434	5.0%	4,204	5.3%	14,082	6.4%	46,320	6.6%
Age 25 to 29 yrs (2007)	403	4.7%	4,267	5.4%	14,216	6.5%	48,984	7.0%
Age 30 to 34 yrs (2007)	579	6.7%	5,555	7.0%	16,284	7.5%	56,393	8.1%
Age 35 to 39 yrs (2007)	671	7.8%	6,353	8.0%	17,495	8.0%	59,942	8.6%
Age 40 to 44 yrs (2007)	817	9.5%	7,278	9.2%	19,036	8.7%	61,663	8.8%
Age 45 to 49 yrs (2007)	810	9.4%	7,270	9.2%	18,951	8.7%	57,607	8.2%
Age 50 to 54 yrs (2007)	814	9.4%	6,510	8.2%	16,261	7.4%	47,480	6.8%
Age 55 to 59 yrs (2007)	533	6.2%	4,977	6.3%	12,567	5.7%	37,385	5.3%
Age 60 to 64 yrs (2007)	311	3.6%	3,144	4.0%	8,434	3.9%	26,599	3.8%
Age 65 to 74 yrs (2007)	332	3.8%	3,178	4.0%	8,784	4.0%	28,194	4.0%
Age 75 to 84 yrs (2007)	107	1.2%	1,493	1.9%	4,338	2.0%	13,356	1.9%
Age 85 yrs plus (2007)	33	0.4%	455	0.6%	1,406	0.6%	4,242	0.6%
Median Age (2007)	35.5 yrs		35.3 yrs		34.3 yrs		33.6 yrs	
<b>Gender Age Distribution</b>								
Female Population (2007)	4,285	49.7%	39,878	50.2%	109,268	50.0%	346,064	49.5%
Age 0 to 19 yrs (2007)	1,363	31.8%	12,246	30.7%	32,585	29.8%	102,957	29.8%
Age 20 to 64 yrs (2007)	2,670	62.3%	24,715	62.0%	68,383	62.6%	217,154	62.7%
Age 65 yrs plus (2007)	253	5.9%	2,918	7.3%	8,300	7.6%	25,953	7.5%
Female Median Age (2007)	36.0 yrs		35.9 yrs		35.1 yrs		34.5 yrs	
Male Population (2007)	4,330	50.3%	39,571	49.8%	109,298	50.0%	353,502	50.5%
Age 0 to 19 yrs (2007)	1,408	32.5%	12,520	31.6%	34,128	31.2%	108,445	30.7%
Age 20 to 64 yrs (2007)	2,703	62.4%	24,842	62.8%	68,942	63.1%	225,218	63.7%
Age 65 yrs plus (2007)	219	5.1%	2,209	5.6%	6,228	5.7%	19,838	5.6%
Male Median Age (2007)	35.0 yrs		34.6 yrs		33.4 yrs		32.8 yrs	

This report was produced using data from private and government sources deemed to be reliable. The information herein is provided without representation or warranty.

# DEMOGRAPHIC PROFILE EXPANDED

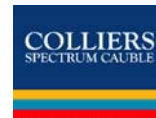
1990 - 2000 Census, 2007 Estimates & 2012 Projections

Calculated using Proportional Block Groups

Prepared For

Lat/Lon: 33.901954/-84.068246

June 2008



Two Midtown Plaza, Suite 1100  
1349 West Peachtree Street, NE  
Atlanta, Georgia 30309-2956  
tel: 404-888-9000  
fax: 404-870-2845

RF5

## Oak Rd & Hutchins Rd Lawrenceville, Georgia

1.00 mi radius      3.00 mi radius      5.00 mi radius      10.00 mi radius

### Household Income Distribution

HH Income \$200,000 or More (2007)	153	5.7%	1,399	5.5%	3,381	4.6%	11,313	4.8%
HH Income \$150,000 to \$199,999 (2007)	210	7.8%	1,965	7.7%	4,369	6.0%	14,690	6.2%
HH Income \$100,000 to \$149,999 (2007)	709	26.4%	6,196	24.3%	14,956	20.4%	44,730	18.8%
HH Income \$75,000 to \$99,999 (2007)	565	21.1%	4,925	19.3%	13,377	18.3%	41,369	17.4%
HH Income \$50,000 to \$74,999 (2007)	555	20.7%	5,350	20.9%	16,325	22.3%	52,823	22.2%
HH Income \$35,000 to \$49,999 (2007)	241	9.0%	2,644	10.4%	9,366	12.8%	31,320	13.2%
HH Income \$25,000 to \$34,999 (2007)	104	3.9%	1,342	5.3%	5,041	6.9%	18,214	7.7%
HH Income \$15,000 to \$24,999 (2007)	92	3.4%	978	3.8%	3,408	4.7%	12,310	5.2%
HH Income \$0 to \$14,999 (2007)	49	1.8%	744	2.9%	2,916	4.0%	10,847	4.6%
HH Income \$35,000+ (2007)	2,434	90.8%	22,480	88.0%	61,774	84.5%	196,244	82.6%
HH Income \$75,000+ (2007)	1,638	61.1%	14,486	56.7%	36,083	49.3%	112,102	47.2%

### Housing

Total Housing Units (2007)	2,880		27,640		79,836		261,907	
Housing Units, Occupied (2007)	2,680	93.1%	25,544	92.4%	73,139	91.6%	237,614	90.7%
Housing Units, Owner-Occupied (2007)	2,456	91.6%	21,353	83.6%	52,221	71.4%	160,948	67.7%
Housing Units, Renter-Occupied (2007)	224	8.4%	4,191	16.4%	20,918	28.6%	76,666	32.3%
Housing Units, Vacant (2007)	200	6.9%	2,096	7.6%	6,697	8.4%	24,293	9.3%
Median Years in Residence (2007)	4.3	yrs	3.8	yrs	3.5	yrs	3.3	yrs

### Marital Status

Never Married (2007)	1,544	23.5%	14,208	23.4%	42,336	25.2%	141,527	26.4%
Now Married (2007)	4,197	63.8%	37,728	62.0%	97,663	58.1%	300,572	56.0%
Separated (2007)	180	2.7%	2,042	3.4%	6,527	3.9%	25,949	4.8%
Widowed (2007)	174	2.7%	1,886	3.1%	5,684	3.4%	18,595	3.5%
Divorced (2007)	483	7.3%	4,958	8.2%	15,842	9.4%	49,921	9.3%

### Household Type

Population Family (2007)	8,123	94.3%	73,065	92.0%	193,788	88.7%	606,154	86.6%
Population Non-Family (2007)	487	5.7%	6,090	7.7%	23,634	10.8%	88,094	12.6%
Population Group Qtrs (2007)	5	0.1%	294	0.4%	1,143	0.5%	5,317	0.8%
Family Households (2007)	2,202	82.2%	20,040	78.5%	53,643	73.3%	167,820	70.6%
Married Couple With Children (2007)	996	23.7%	9,014	23.9%	22,377	22.9%	71,091	23.7%
Average Family Household Size (2007)	3.69		3.65		3.61		3.61	
Non-Family Households (2007)	477	17.8%	5,504	21.5%	19,496	26.7%	69,794	29.4%

### Household Size

1 Person Household (2007)	370	13.8%	4,230	16.6%	14,918	20.4%	53,288	22.4%
2 Person Households (2007)	716	26.7%	7,095	27.8%	20,477	28.0%	67,120	28.2%
3 Person Households (2007)	594	22.2%	5,301	20.8%	14,431	19.7%	44,875	18.9%
4 Person Households (2007)	562	21.0%	5,139	20.1%	13,254	18.1%	40,660	17.1%
5 Person Households (2007)	276	10.3%	2,385	9.3%	6,261	8.6%	18,894	8.0%
6+ Person Households (2007)	160	6.0%	1,393	5.5%	3,798	5.2%	12,777	5.4%

### Household Vehicles

Total Vehicles Available (2007)	6,286		56,262		151,261		467,926	
Household: 0 Vehicles Available (2007)	18	0.7%	349	1.4%	1,613	2.2%	7,361	3.1%
Household: 1 Vehicles Available (2007)	406	15.2%	5,108	20.0%	18,910	25.9%	68,884	29.0%
Household: 2+ Vehicles Available (2007)	2,255	84.2%	20,087	78.6%	52,616	71.9%	161,369	67.9%
Average Vehicles Per Household (2007)	2.3		2.2		2.1		2.0	

This report was produced using data from private and government sources deemed to be reliable. The information herein is provided without representation or warranty.

# DEMOGRAPHIC PROFILE EXPANDED

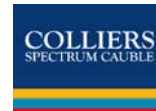
1990 - 2000 Census, 2007 Estimates & 2012 Projections

Calculated using Proportional Block Groups

Prepared For

Lat/Lon: 33.901954/-84.068246

June 2008



Two Midtown Plaza, Suite 1100  
1349 West Peachtree Street, NE  
Atlanta, Georgia 30309-2956  
tel: 404-888-9000  
fax: 404-870-2845

RF5

## Oak Rd & Hutchins Rd Lawrenceville, Georgia

	1.00 mi radius		3.00 mi radius		5.00 mi radius		10.00 mi radius	
<b>Labor Force</b>								
Est. Labor: Population Age 16+ (2007)	6,422		59,520		164,751		526,797	
Est. Civilian Employed (2007)	4,425	68.9%	41,560	69.8%	114,334	69.4%	364,997	69.3%
Est. Civilian Unemployed (2007)	392	6.1%	2,702	4.5%	7,948	4.8%	27,332	5.2%
Est. in Armed Forces (2007)	7	0.1%	44	0.1%	119	0.1%	370	0.1%
Est. not in Labor Force (2007)	1,598 24.9%		15,214 25.6%		42,349 25.7%		134,097 25.5%	

<b>Occupation</b>								
Occupation: Population Age 16+ (2000)	3,632		32,953		90,049		292,292	
Mgmt, Business, & Financial Operations (200)	802	22.1%	6,562	19.9%	16,704	18.5%	53,811	18.4%
Professional and Related (2000)	839	23.1%	7,604	23.1%	19,248	21.4%	61,710	21.1%
Service (2000)	319	8.8%	3,507	10.6%	9,703	10.8%	31,827	10.9%
Sales and Office (2000)	1,106	30.4%	9,805	29.8%	27,903	31.0%	87,109	29.8%
Farming, Fishing, and Forestry (2000)	2	0.1%	14	0.0%	44	0.0%	257	0.1%
Construct, Extraction, & Maintenance (2000)	264	7.3%	2,674	8.1%	8,073	9.0%	29,176	10.0%
Production, Transp. & Material Moving (2000)	301	8.3%	2,786	8.5%	8,375	9.3%	28,403	9.7%
Percent White Collar Workers (2000)	75.6%		72.7%		70.9%		69.3%	
Percent Blue Collar Workers (2000)	24.4%		27.3%		29.1%		30.7%	

<b>Consumer Expenditure (in \$,000,000s)</b>								
Total Household Expenditure (2007)	\$177		\$1,636		\$4,416		\$14,111	
Total Non-Retail Expenditures (2007)	\$103	58.0%	\$948	58.0%	\$2,556	57.9%	\$8,163	57.8%
Total Retail Expenditures (2007)	\$74	42.0%	\$688	42.0%	\$1,860	42.1%	\$5,948	42.2%
Apparel (2007)	\$9	4.8%	\$79	4.8%	\$212	4.8%	\$679	4.8%
Contributions (2007)	\$7	3.9%	\$64	3.9%	\$169	3.8%	\$543	3.8%
Education (2007)	\$5	2.6%	\$43	2.6%	\$112	2.5%	\$358	2.5%
Entertainment (2007)	\$10	5.7%	\$93	5.7%	\$249	5.6%	\$796	5.6%
Food And Beverages (2007)	\$26	14.9%	\$244	14.9%	\$666	15.1%	\$2,128	15.1%
Furnishings And Equipment (2007)	\$8	4.6%	\$75	4.6%	\$199	4.5%	\$635	4.5%
Gifts (2007)	\$5	2.8%	\$46	2.8%	\$121	2.7%	\$387	2.7%
Health Care (2007)	\$10	5.7%	\$94	5.7%	\$258	5.8%	\$826	5.9%
Household Operations (2007)	\$7	3.8%	\$62	3.8%	\$165	3.7%	\$526	3.7%
Miscellaneous Expenses (2007)	\$3	1.6%	\$27	1.6%	\$72	1.6%	\$232	1.6%
Personal Care (2007)	\$3	1.4%	\$23	1.4%	\$64	1.4%	\$204	1.4%
Personal Insurance (2007)	\$2	1.1%	\$18	1.1%	\$47	1.1%	\$150	1.1%
Reading (2007)	\$1	0.3%	\$5	0.3%	\$14	0.3%	\$46	0.3%
Shelter (2007)	\$35	19.5%	\$318	19.5%	\$855	19.4%	\$2,731	19.4%
Tobacco (2007)	\$1	0.6%	\$9	0.6%	\$26	0.6%	\$85	0.6%
Transportation (2007)	\$35	20.1%	\$328	20.0%	\$889	20.1%	\$2,831	20.1%
Utilities (2007)	\$12	6.6%	\$108	6.6%	\$298	6.7%	\$955	6.8%

<b>Educational Attainment</b>								
Adult Population (25 Years or Older) (2007)	5,410		50,480		137,771		441,843	
Elementary (0 to 8) (2007)	87	1.6%	1,325	2.6%	4,682	3.4%	19,054	4.3%
Some High School (9 to 11) (2007)	256	4.7%	2,744	5.4%	8,472	6.1%	28,205	6.4%
High School Graduate (12) (2007)	1,443	26.7%	12,942	25.6%	37,700	27.4%	116,743	26.4%
Some College (13 to 16) (2007)	1,084	20.0%	9,966	19.7%	27,859	20.2%	85,017	19.2%
Associate Degree Only (2007)	497	9.2%	4,342	8.6%	11,567	8.4%	37,765	8.5%
Bachelor Degree Only (2007)	1,399	25.9%	13,127	26.0%	32,804	23.8%	105,151	23.8%
Graduate Degree (2007)	644	11.9%	6,034	12.0%	14,685	10.7%	49,908	11.3%

This report was produced using data from private and government sources deemed to be reliable. The information herein is provided without representation or warranty.

# DEMOGRAPHIC PROFILE EXPANDED

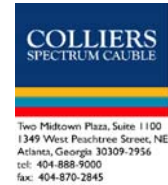
1990 - 2000 Census, 2007 Estimates & 2012 Projections

Calculated using Proportional Block Groups

Prepared For

Lat/Lon: 33.901954/-84.068246

June 2008



RF5

## Oak Rd & Hutchins Rd Lawrenceville, Georgia

	1.00 mi radius		3.00 mi radius		5.00 mi radius		10.00 mi radius	
<b>Units In Structure</b>								
1 Detached Unit (2000)	2,202	98.4%	18,371	88.8%	44,307	74.8%	134,686	68.8%
1 Attached Unit (2000)	13	0.6%	350	1.7%	1,929	3.3%	8,247	4.2%
2 to 4 Units (2000)	8	0.3%	466	2.3%	3,139	5.3%	12,163	6.2%
5 to 9 Units (2000)	3	0.1%	219	1.1%	2,436	4.1%	13,152	6.7%
10 to 19 Units (2000)	0		511	2.5%	3,630	6.1%	14,530	7.4%
20 to 49 Units (2000)	0		220	1.1%	1,463	2.5%	4,565	2.3%
50 or more Units (2000)	0		197	1.0%	1,387	2.3%	4,778	2.4%
Mobile Home or Trailer (2000)	12	0.5%	355	1.7%	913	1.5%	3,509	1.8%
Other Structure (2000)	0		9	0.0%	9	0.0%	78	0.0%
<b>Homes Built By Year</b>								
Homes Built 1999 to 2000	86	3.8%	1,020	4.9%	2,781	4.7%	8,720	4.5%
Homes Built 1995 to 1998	374	16.7%	3,923	19.0%	10,088	17.0%	33,216	17.0%
Homes Built 1990 to 1994	175	7.8%	3,029	14.6%	8,695	14.7%	31,674	16.2%
Homes Built 1980 to 1989	862	38.5%	6,963	33.6%	21,909	37.0%	68,842	35.2%
Homes Built 1970 to 1979	629	28.1%	4,662	22.5%	12,143	20.5%	34,756	17.8%
Homes Built 1960 to 1969	53	2.4%	715	3.5%	2,543	4.3%	12,085	6.2%
Homes Built 1950 to 1959	28	1.3%	212	1.0%	613	1.0%	3,724	1.9%
Homes Built Before 1949	30	1.4%	175	0.8%	442	0.7%	2,689	1.4%
<b>Home Values</b>								
Home Values \$1,000,000 or More (2000)	0		19	0.1%	29	0.1%	193	0.2%
Home Values \$500,000 to \$999,999 (2000)	0		42	0.3%	136	0.3%	932	0.8%
Home Values \$400,000 to \$499,999 (2000)	1	0.0%	73	0.4%	214	0.5%	807	0.7%
Home Values \$300,000 to \$399,999 (2000)	11	0.6%	367	2.2%	999	2.5%	3,630	3.0%
Home Values \$200,000 to \$299,999 (2000)	320	16.2%	2,338	14.2%	4,750	11.9%	15,841	13.0%
Home Values \$150,000 to \$199,999 (2000)	364	18.4%	4,115	24.9%	8,254	20.7%	28,070	23.0%
Home Values \$100,000 to \$149,999 (2000)	994	50.4%	7,714	46.7%	19,812	49.6%	53,365	43.8%
Home Values \$70,000 to \$99,999 (2000)	257	13.0%	1,681	10.2%	5,306	13.3%	16,560	13.6%
Home Values \$50,000 to \$69,999 (2000)	27	1.4%	136	0.8%	314	0.8%	1,548	1.3%
Home Values \$25,000 to \$49,999 (2000)	0		11	0.1%	57	0.1%	444	0.4%
Home Values \$0 to \$24,999 (2000)	0		6	0.0%	79	0.2%	457	0.4%
Owner Occupied Median Home Value (2000)	\$140,421		\$148,570		\$143,041		\$147,134	
Renter Occupied Median Rent (2000)	\$791		\$755		\$731		\$722	
<b>Transportation To Work</b>								
Drive to Work Alone (2000)	2,949	81.0%	27,127	82.2%	73,534	81.6%	230,080	78.6%
Drive to Work in Carpool (2000)	414	11.4%	3,744	11.3%	11,199	12.4%	43,080	14.7%
Travel to Work - Public Transportation (2000)	33	0.9%	217	0.7%	540	0.6%	4,057	1.4%
Drive to Work on Motorcycle (2000)	7	0.2%	27	0.1%	114	0.1%	285	0.1%
Walk or Bicycle to Work (2000)	15	0.4%	145	0.4%	532	0.6%	2,659	0.9%
Other Means (2000)	24	0.7%	195	0.6%	614	0.7%	2,081	0.7%
Work at Home (2000)	200	5.5%	1,545	4.7%	3,635	4.0%	10,403	3.6%
<b>Travel Time</b>								
Travel to Work in 14 Minutes or Less (2000)	468	13.6%	4,414	14.0%	14,355	16.6%	47,394	16.8%
Travel to Work in 14 to 29 Minutes (2000)	929	27.0%	9,367	29.8%	25,083	29.0%	82,905	29.4%
Travel to Work in 30 to 59 Minutes (2000)	1,409	41.0%	13,110	41.7%	35,584	41.1%	116,605	41.3%
Travel to Work in 60 Minutes or More (2000)	635	18.5%	4,564	14.5%	11,511	13.3%	35,338	12.5%
Average Travel Time to Work (2000)	35.0	mins	32.3	mins	31.2	mins	30.7	mins

This report was produced using data from private and government sources deemed to be reliable. The information herein is provided without representation or warranty.