

# Barrett Park

## 1155 ROBERTS BOULEVARD

Kennesaw, GA 30144

**16,851 - 29,728 SF FOR LEASE - NORTHWEST**



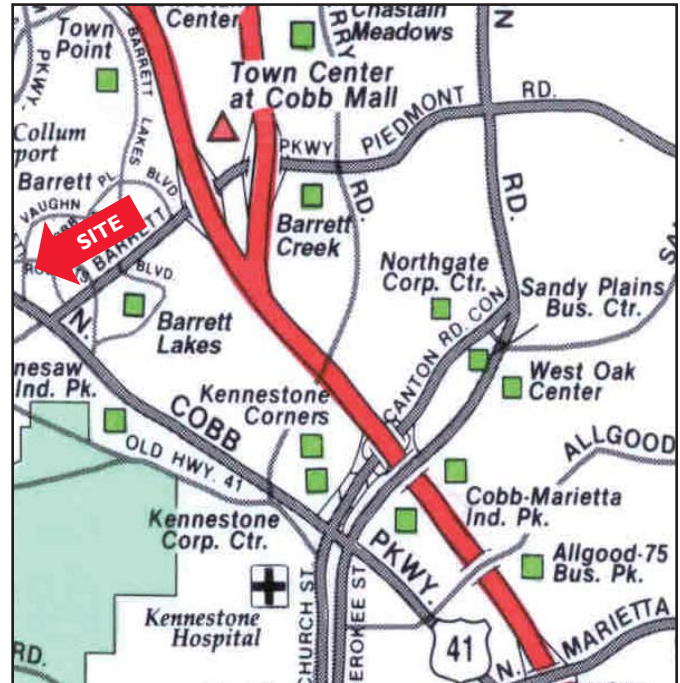
### PROPERTY FEATURES:

- Strategically located in the Northwest Atlanta office market
- 16,581-29,728 SF Available
- 100% single story office
- Full-height, contiguous glass
- 4.1 / 1,000 SF Parking Ratio (122 spaces)
- U-shaped building with center courtyard
- Convenient to Barrett and Cobb Parkway
- Town Center Mall and other areas amenities nearby

### PROPERTY STATISTICS:



### LOCATION MAP:



FOR MORE INFORMATION, PLEASE CONTACT:

**DOUGLAS BIGGS:**  
404.877.9253 (direct)  
douglas.biggs@colliers.com

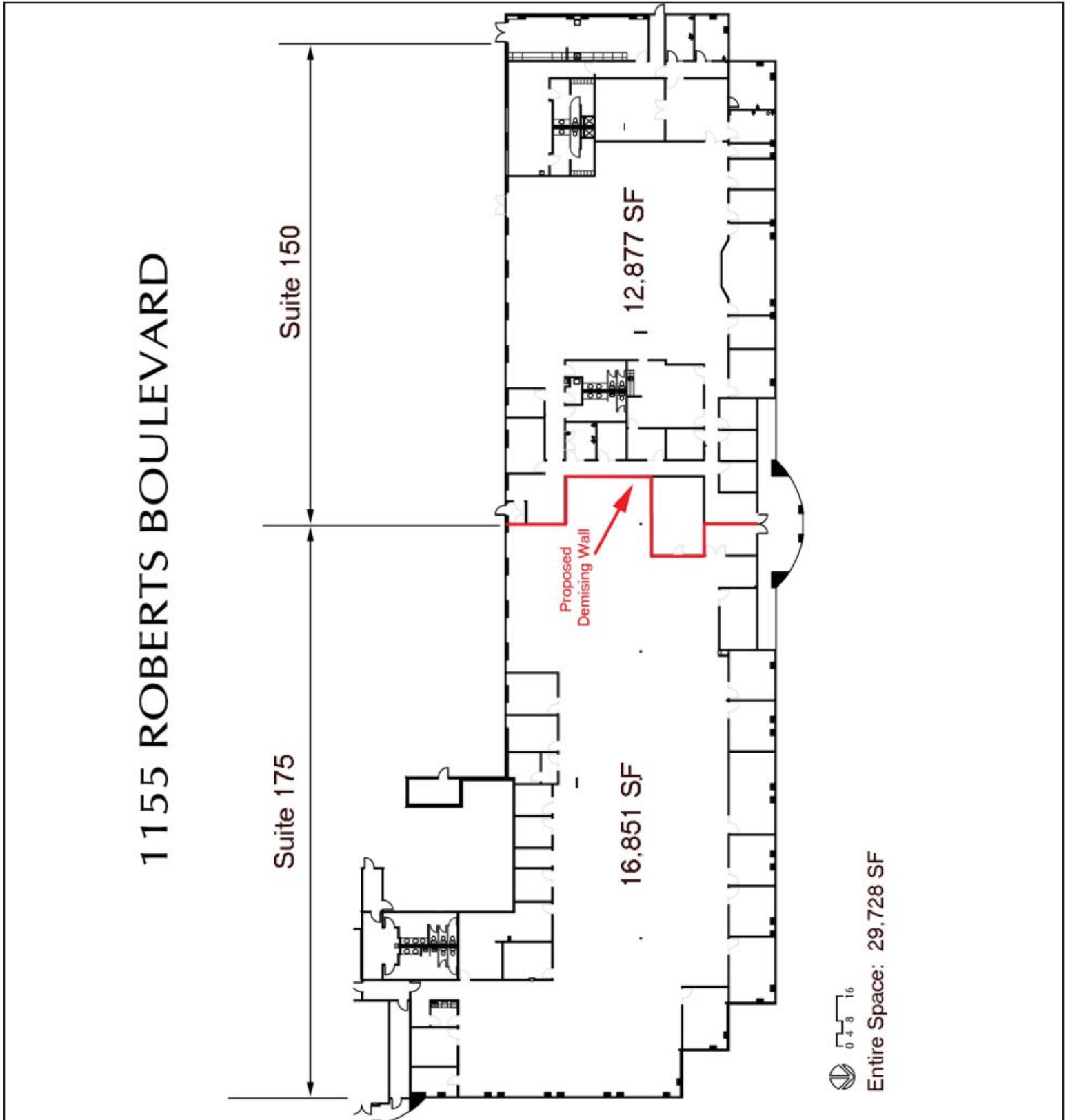
**BILL BUIST, SIOR:**  
404.877.9233 (direct)  
bill.buist@colliers.com

**COLLIERS**  
SPECTRUM CAUBLE

# 16,851 - 29,728 SF FOR LEASE

Barrett Park  
1155 Roberts Boulevard

COLLIERS  
SPECTRUM CAUBLE



COLLIERS SPECTRUM CAUBLE

Two Midtown Plaza, Suite 1100 / 1349 West Peachtree Street, NE / Atlanta, GA 30309-2956 / 404.888.9000 (phone) / 404.870.2845 (fax) / [www.collierspectrumcauble.com](http://www.collierspectrumcauble.com)

~ COLLIERS INTERNATIONAL IS A WORLDWIDE AFFILIATION OF INDEPENDENTLY OWNED AND OPERATED COMPANIES ~