

Ravine One

245 TOWNPARK DRIVE

Kennesaw, GA 30144

7,338 SF FOR SUBLEASE - NORTHWEST



PROPERTY FEATURES:

- 7,338 SF Available for Sublease Suite 450
- Rental Rate: \$19.00 SF; Full-Service
- Term through October 31, 2013
- Negotiable Rental Rate
- Furniture Available
- Parking 4.00 / 1,000
- Conference Center and Fitness Center available for use within office park
- Two Hotels located within office park
- Conveniently located near area hotels, restaurants, and shopping
- Office Park offers beautiful natural setting
- Easy Access to Interstates I-75 / I-575 and Chastain Road

LOCATION MAP:



FOR MORE INFORMATION, PLEASE CONTACT:

PETE SHELTON:
404.877.9283 (direct)
pete.shelton@colliers.com

ANDREW WALKER:
404.877.9260 (direct)
andrew.m.walker@colliers.com

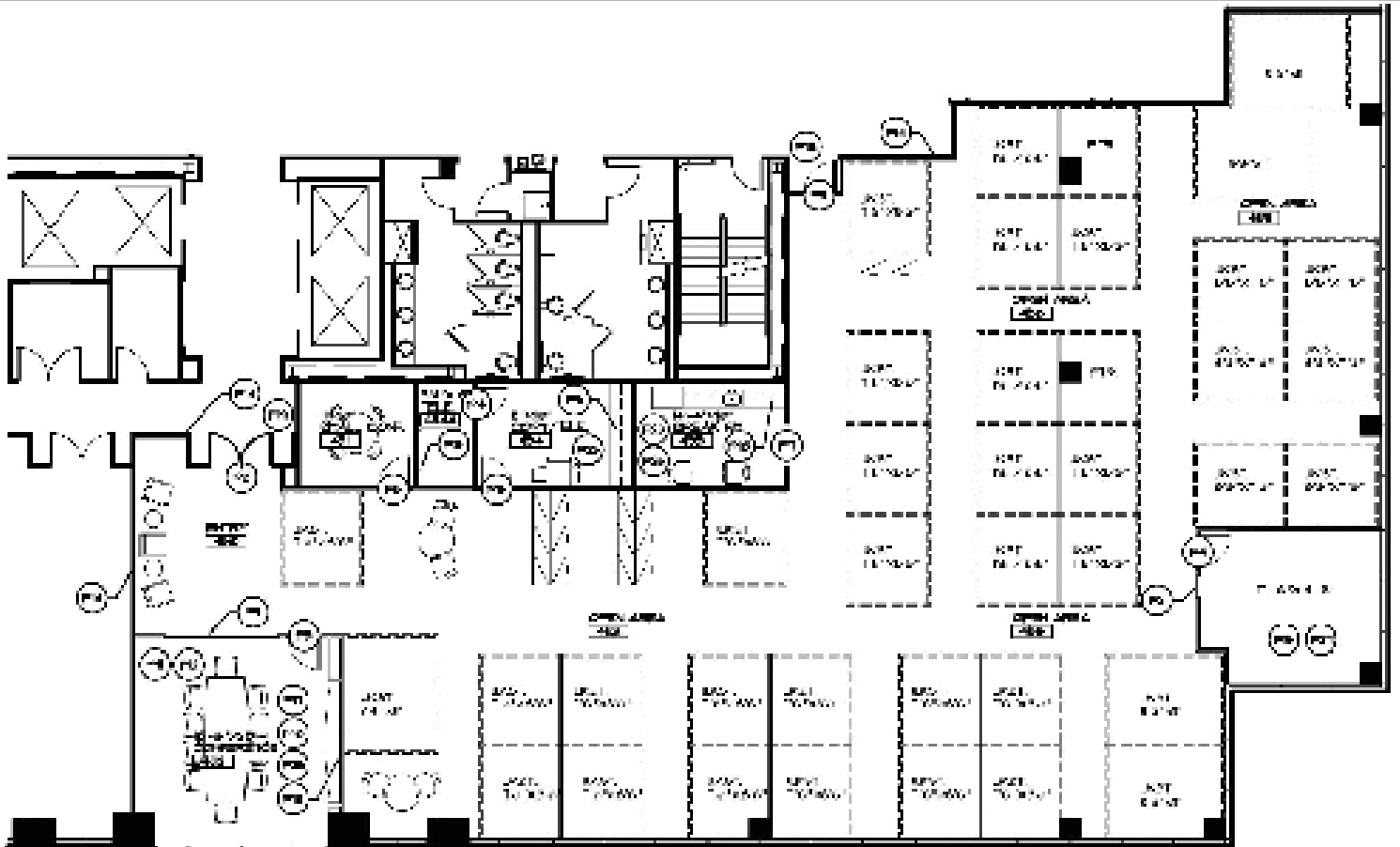
COLLIERS
SPECTRUM CAUBLE

7,338 SF FOR SUBLEASE

Ravine One

245 TownPark Drive, Suite 450

COLLIERS
SPECTRUM CAUBLE



COLLIERS SPECTRUM CAUBLE

Two Midtown Plaza, Suite 1100 / 1349 West Peachtree Street, NE / Atlanta, GA 30309-2956 / 404.888.9000 (phone) / 404.870.2845 (fax) / www.collierspectrumcauble.com

~ COLLIERS INTERNATIONAL IS A WORLDWIDE AFFILIATION OF INDEPENDENTLY OWNED AND OPERATED COMPANIES ~