

THE PEACHTREE 1355 PEACHTREE STREET

Atlanta, GA 30309

FOR SUBLEASE ~ 850 SF



BUILDING FEATURES:

- Upgraded space in the heart of Midtown
- Current Lease Expires 12/31/2013
- Rental Rate of \$16.00/SF
- Furniture Available
- Convenient to I-75 and I-85
- Amenities Include:

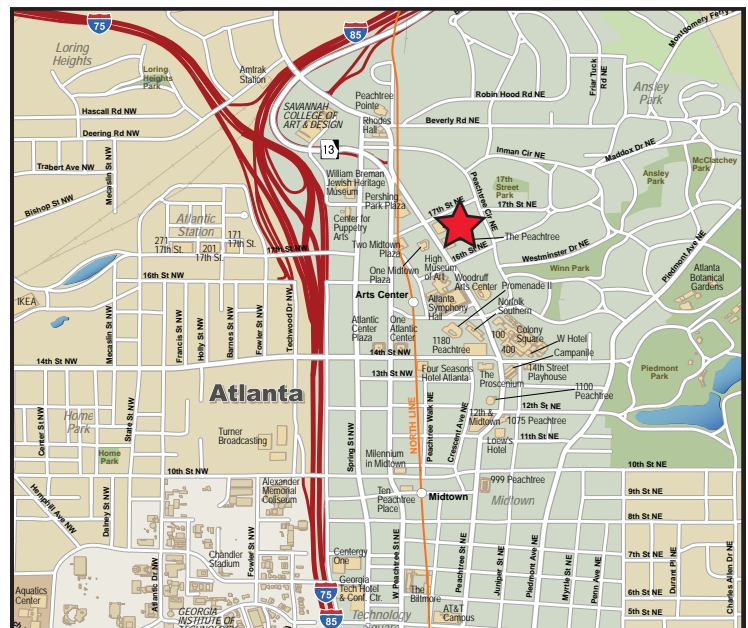
Deck Parking
On-Site Security & Management
Cafe / Exercise Facility
Newsstand / Sundries Shop

Walking distance to:
MARTA / Arts Center Station,
The High Museum, and several area restaurants

PROPERTY STATISTICS:

Property Name:	The Peachtree
Property Address:	1355 Peachtree Street, 11th Floor
Building Square Feet:	344,974 SF
Parking Ratio:	2.30/1,000 SF

LOCATION MAP:



FOR MORE INFORMATION, PLEASE CONTACT:

BRETT KINGMAN:
404.877.9248 (direct)
brett.kingman@colliers.com

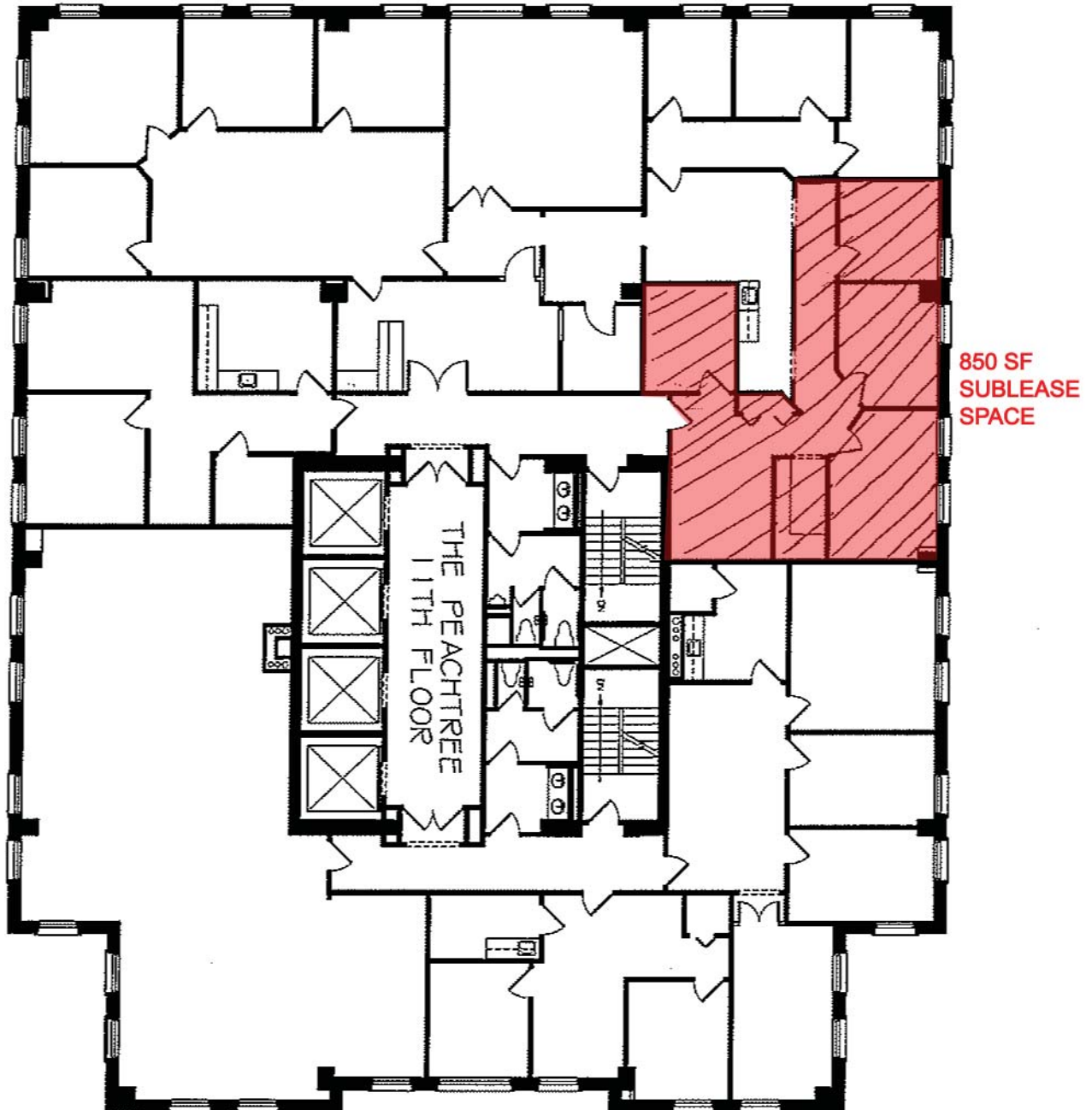
**COLLIERS
SPECTRUM CAUBLE**

850 SF FOR SUBLEASE

The Peachtree

1355 Peachtree Street ~ 11th Floor

COLLIERS
SPECTRUM CAUBLE



COLLIERS SPECTRUM CAUBLE

Two Midtown Plaza, Suite 1100 / 1349 West Peachtree Street, NE / Atlanta, GA 30309-2956 / 404.888.9000 (phone) / 404.870.2845 (fax) / www.collierspectrumcauble.com

~ COLLIERS INTERNATIONAL IS A WORLDWIDE AFFILIATION OF INDEPENDENTLY OWNED AND OPERATED COMPANIES ~