

4080 SHIRLEY DRIVE

Atlanta, GA 30336

57,874 SF FOR SALE / LEASE - FULTON INDUSTRIAL BLVD



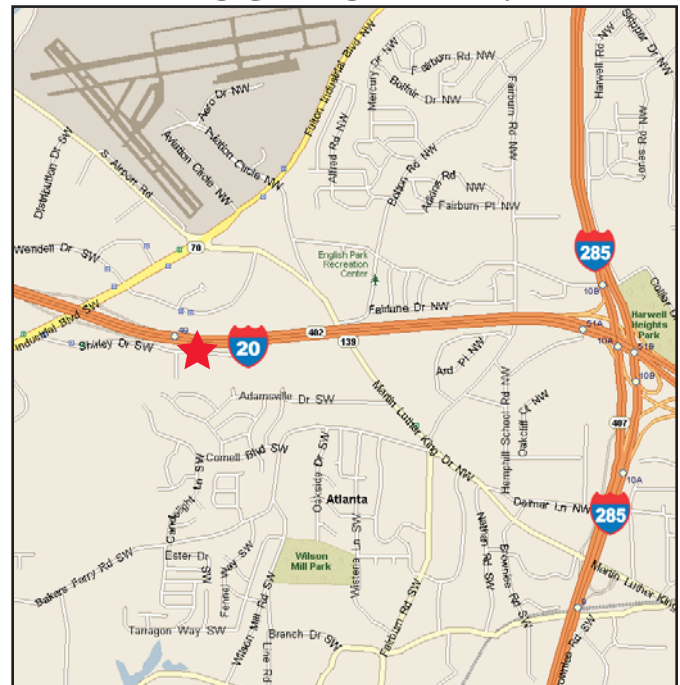
PROPERTY FEATURES:

- Newly Renovated
- Immediate Access to I-20
- Potential Visibility on I-20
- Great Manufacturing Building

PROPERTY STATISTICS:

Property Address:	4080 Shirley Drive
Land Area:	5.62 Acres
Available Square Feet:	57,874 SF
Office Square Feet:	9,628 SF
Ceiling Height:	18'-24' clear
Dock-High Doors:	8
Drive-In Doors:	1
Outside Storage:	Potential Outside Storage
Sprinkler:	Yes
Computer Room:	Yes
Zoning:	(M-2)
Construction Type:	Masonry

LOCATION MAP:



FOR MORE INFORMATION, PLEASE CONTACT:

CHRIS TOMASULO:
404.877.9287 (direct)
chris.tomasulo@colliers.com

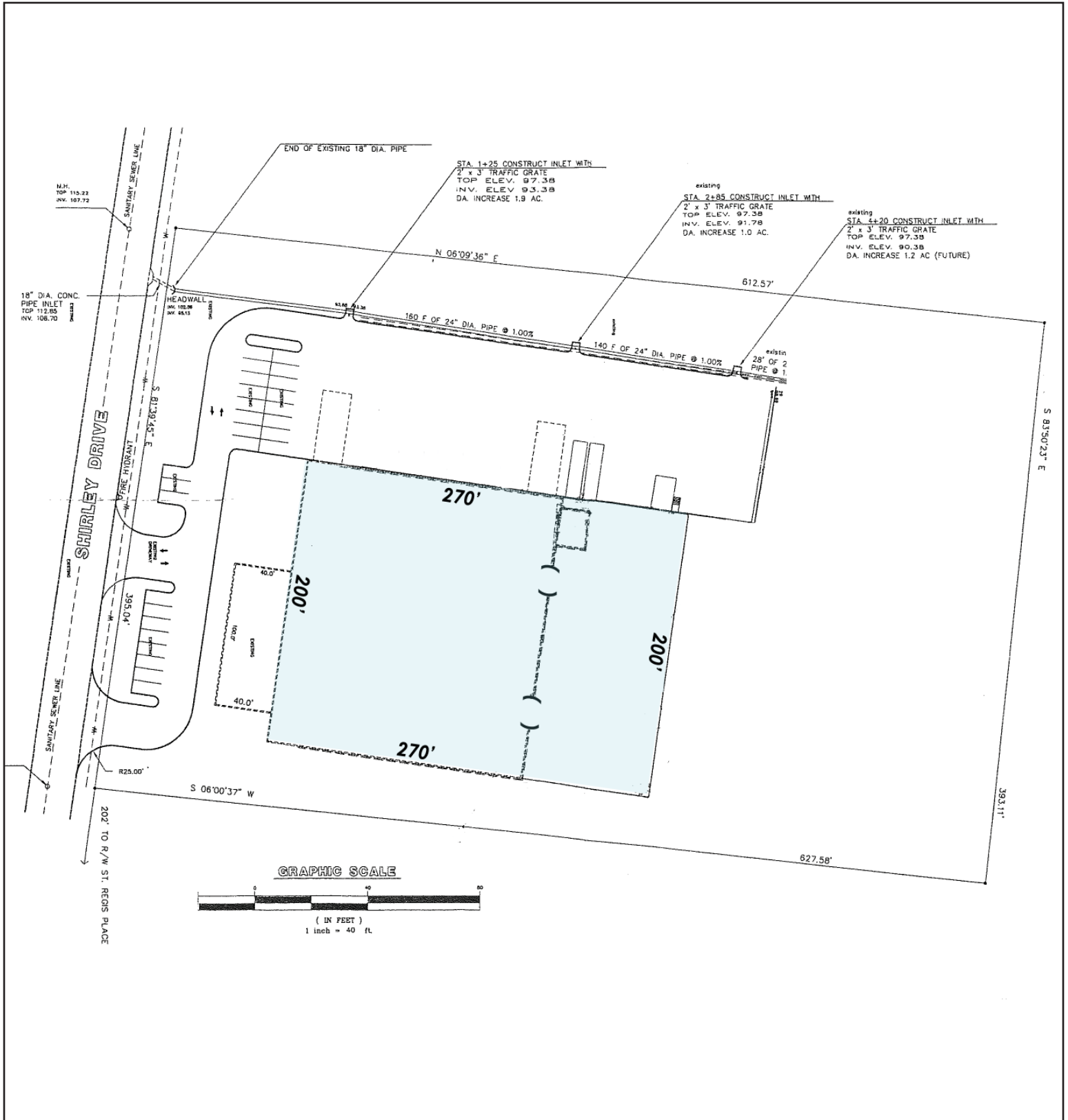
SEAN BOSWELL:
404.877.9268 (direct)
sean.boswell@colliers.com

COLLIERS
SPECTRUM CAUBLE

57,874 SF FOR SALE OR LEASE

4080 Shirley Drive
Atlanta, GA 30336

COLLIERS
SPECTRUM CAUBLE



COLLIERS SPECTRUM CAUBLE

Two Midtown Plaza, Suite 1100 / 1349 West Peachtree Street, NE / Atlanta, GA 30309-2956 / 404.888.9000 (phone) / 404.870.2845 (fax) / www.collierspectrumcauble.com

~ COLLIERS INTERNATIONAL IS A WORLDWIDE AFFILIATION OF INDEPENDENTLY OWNED AND OPERATED COMPANIES ~